



ARTESIA PUMP STATION ADDITIONAL WELL NOS. 7 AND 8

Solicitation No: CO-00416

Job No.: 21-8602

ADDENDUM 3

Date: SEPTEMBER 15, 2021

To Bidder of Record:

This addendum, applicable to work referenced above, is an amendment to the bid proposal, plans and specifications and as such will be a part of and included in the Contract Documents. Acknowledge receipt of this addendum by entering the Addendum number and issue date on the space provided in submitted copies of the bid proposal.

RESPONSES TO QUESTIONS

- 1. Question: Section 43 21 13 – Table 2.1.B.1 – Revise ‘Maximum Operating Speed’ to state ‘Operating Speed’.**
Response: ‘Maximum Operating Speed’ will be revised to ‘Operating Speed’. See Changes to the Specifications, item 1.
- 2. Question: Section 43 21 13 – Table 2.1.B.1 – Clarify meaning of “Pump Column Inner Diameter”. I believe this should be well casing ID? From project records, WP-3 casing OD is 22”, WP-4/5 casing OD are 30”.**
Response: “Pump Column Inner Diameter, (in.)” will be revised to “Approximate Well Casing Inner Diameter.” WP-3 casing inner diameter is approximately 21.25”. WP-5 casing nominal diameter was originally 30” but was lined and reduced to 25.25” inner diameter. WP-4 approximate casing inner diameter is currently 29”. Selected Contractor shall field verify dimensions. Well Data packages include casing information where known. See Changes to the Specifications, item 2.
- 3. Question: Section 43 21 13 – Table 2.1.B.1 – Revise maximum shutoff head to allow up to 200’ TDH.**
Response: Maximum shutoff head will be revised to 210’ TDH. See Changes to the Specifications, item 3.
- 4. Question: Section 43 21 13 –Paragraph 2.3.A.1 – Remove cast iron. Discharge head/base should be fabricated steel.**
Response: Discharge head to be fabricated steel. See Changes to the Specifications, item 4.
- 5. Question: Section 43 21 13 –Paragraph 2.3.A.10 – Allow threaded column, especially for WP-3. Flanges on any column size greater than 12” diameter will not provide enough clearance from well casing ID.**
Response: Threaded column is not acceptable. Pump Column Nominal Diameter (in.) will be added to the specifications for each well, 16” at Well Pump 3 and Well Pump 4, and 18” at Well Pump 5. See changes to the Specifications, item 6.
- 6. Question: Section 43 21 13 –Paragraph 2.8.A.2 – Revise test requirement to be bowl performance test. Complete pump tests cannot be provided due to length. Overall efficiency can be calculated based on standard friction loss calculations.**
Response: Bowl performance test is allowable. See Changes to the Specifications, item 7.
- 7. Question: Section 43 21 13 –Paragraph 3.1 – Add requirement that well pumps be assembled and installed by a Licensed Well Installer**
Response: Installation of well pumps shall be performed by a licensed Texas Water Well Driller and Pump Installer. See Changes to the Specifications, item 8.

- 8. Question: Plan Drawing M-03 – Add anchored pipe support under 20” butterfly valve. Discharge flange should not be supporting weigh of valve.**
Response: Not all pipe support locations are shown on plans. Piping shall be supported as needed. Contractor’s shop drawing submittal shall show the locations of pipe supports, and calculations for pipe support shall be provided for review by Engineer in accordance with the Specifications.
- 9. Question: Section 43 21 13 – Paragraph 2.2 – Manufacturers, Goulds by Gicon, Gicon is no longer a Goulds Distributer, can National Pump Company be approved as equal and allowed**
Response: Pump shall be by manufacturers as specified, no exceptions. The selected contractor may make post award substitution requests which will be evaluated by SAWS and ENGINEER. Pumps by Goulds Water Technology may be provided by other representatives.
- 10. Question: Per the reference bid, there appears to be an overlap with Artesia Pump Station Improvements, SAWS Job No.: 18-8603 and 14-6001 such as the pulling and setting of the pumps are noted in the plans in this bid and they were part of the other bid.**
Response: Contractor shall coordinate with SAWS and Pump Station Improvements Project contractor in accordance with Special Conditions SC6.
- 11. Question: Section 43 21 13 – Paragraph 3.1 – In addition to what is stated in the specs, it would be in the best interest for SAWS that whomever is the contractor providing the equipment, should also be the contractor install in lieu of having a third party install the equipment. The specifications should read that the water well contractor who is providing the equipment must be the same contractor that is required to install the equipment. The well contractor should not provide the well pumping equipment and then separately hire a third party to install it.**
Response: Pumps shall be furnished and installed by the same Contractor. See Changes to the Specifications, item 8.
- 12. Question: Drawing C-07 – Drawing C-07 detail 1 indicates 6 inches of lime treated base to be used as a subgrade under the concrete roadway. Please clarify the percentage of lime to be used?**
Response: Use Pavement Subbase in lieu of Lime Treated Subgrade. See changes to the Drawings, item 4.
- 13. Question: Bidding Instructions – Paragraph 1.A – As per “Instruction to Respondents, Section 1.a, this proposal needs to be submitted electronically but as per section 4, the Electronic proposals must be submitted with the original price proposal form attached herein and shall be sealed in an envelope plainly marked for the outside with solicitation number, the date and time of the solicitation deadline, and the name of the project”. Please clarify, is the bid form to be submitted electronically or submitted as a sealed hard copy? Or both?**
Response: For this project SAWS is accepting electronic bids only.
- 14. Question: Section 33 11 13 – Paragraph 1.4.P – In Section 33 11 13, Well Drilling and Testing, Part 1.4 Contractor Submittals, in paragraph P., there is a reference to applicable U.S. Army Corps of Engineers permits. Would there be a Corp of Engineers permit associated with this Project?**
Response: No USACE permits are associated with this project. See changes to the Specifications, item 5.
- 15. Question: Section 42 21 13 – Paragraph 1.3.B.1 – In Section 43 21 13, Vertical Line Shaft Well Pumps, in Part 1.3 Quality Assurance, in paragraph B.1., it states “obtain all equipment included in this Section regardless of component manufacturer from a single pump manufacturer.” Shouldn’t this state that the “Contractor will certify that all specified components are compatible and comprise a functional unit suitable for the specified performance and design requirements.”**
Response: The intent of the specification is to ensure compatibility of pump equipment by obtaining all pump equipment by a single pump manufacturer.
- 16. Question: Section 42 21 13 – Paragraph 2.2.A – In Section 43 21 13, in Part 2.2 Manufacturers, Paragraph A, there is a list of pump manufacturers. Since GICON was purchased by Headwaters and no longer offers Goulds Pumps, is Gould Pumps still acceptable to SAWS?**
Response: Pumps by Goulds Water Technology may be provided by other representatives.
- 17. Question: Section 42 21 13 – Paragraph 2.2.A – Will SAWS accept a pump bowl manufactured by Headwaters?**
Response: Pump shall be by manufacturers as specified in Section 43 21 13, Paragraph 2.2.A, no exceptions.

18. Question: Section 42 21 13 – Paragraph 2.2.A – Will SAWS accept line shaft turbine pump components manufactured by Nation Pump Company?

Response: Pump shall be by manufacturers as specified in Section 43 21 13, Paragraph 2.2.A, no exceptions.

CHANGES TO THE SPECIFICATIONS

1. 43 21 13 - Vertical Lineshaft Well Pumps

Paragraph 2.1.B.1 – Table: **Delete** “Maximum Operating Speed, (rpm)” and **replace** with the following:
“Operating Speed, (rpm)”

2. 43 21 13 - Vertical Lineshaft Well Pumps

Paragraph 2.1.B.1 – Table: **Delete** “Pump Column Inner Diameter, (in)” and the respective values and **replace** with the following:

“Well Casing Inner Diameter (in)”.

Well 3: 21.25”

Well 4: 29”

Well 5: 25.25”

Well 7: 29”

Well 8: 29”

3. 43 21 13 - Vertical Lineshaft Well Pumps

Paragraph 2.1.B.1 – Table: **Delete** “175” from all columns in row “Maximum Shutoff Head (ft.) and **replace** each with the value 210.

4. 43 21 13 - Vertical Lineshaft Well Pumps

Paragraph 2.3.A.1:

Delete:

“Pump Base: A base of high-grade cast-iron or fabricated steel shall be provided for mounting the driver, with 1-inch tap for the sounder tubes and the supporting pump column. The surface discharge outlet shall be flanged. Flanges shall be ANSI B15.1, Class 150.”

Replace with the following:

“Pump Base: A base of fabricated steel shall be provided for mounting the driver. Provide with 1-inch tap for the sounder tubes and the supporting pump column. The surface discharge outlet shall be flanged. Flanges shall be ANSI B15.1, Class 150.”

5. 33 11 13 – Well Drilling and Testing, General

Paragraph 1.4.P: **Delete** “including any applicable U.S. Army Corps of Engineer permits.”

6. 43 21 13 – Vertical Lineshaft Well Pumps

Paragraph 2.1.B.1: **Add** Row labeled “Pump Column Nominal Diameter (in.)” and **add** the following values:

Well 3: 16”

Well 4: 16”

Well 5: 18”

Well 7: 24”

Well 8: 24”

7. 43 21 13 – Vertical Lineshaft Well Pumps

Paragraph 2.8.A.2: **Delete** entire paragraph and **replace** with:

“Perform bowl performance test in accordance with ANSI/HI-14.6. Submit test procedure to ENGINEER for approval. Pump shall be operated from zero to maximum capacity as shown on the approved curve. Results of the test shall be shown in a plot of test curves showing head, flow, horsepower, bowl efficiency, overall efficiency as calculated using known friction factors, and current. Readings shall be taken at a minimum of five evenly-spaced capacity points including shutoff, design point, and minimum head for which pump is designed to operate.”

8. 43 21 13 - Vertical Lineshaft Well Pumps

Paragraph 3.1: **Add** the following:

“F. Well pumps shall be furnished, assembled, and installed by a single Licensed Water Well Driller and Pump Installer.”

Paragraph 1.4.B: **Add** the following:

“3. Copy of Licensed Water Well Driller and Pump Installer information.”

9. Respondent Questionnaire – **Delete** in its entirety the Respondent Questionnaire and **replace** with the revised version attached to this Addendum. Respondents shall use this version when submitting a proposal for this RFCSP.

10. Instructions to Respondents – **Delete** Instructions to Respondents Paragraph 9.b., and **replace** with the following:

“Contractor agrees that, unless it is a sole proprietorship or a company with fewer than 10 full-time employees and the value of this Contract is less than \$100,000, it:

- a. does not boycott Israel and will not do so during the term of this Contract;
- b. does not boycott energy companies and will not do so during the term of this Contract;
- c. does not have a practice, policy, guidance, or directive that discriminates against a firearm entity or firearm trade association and will not discriminate during the term of the Contract against a firearm entity or firearm trade association;

This provision is in compliance with Chapters §2271 and 2274 of the Texas Government Code. SAWS agrees to comply with the United States and Texas Constitutions in consideration of whether to enforce this provision.”

CHANGES TO THE DRAWINGS

1. **Delete** Drawing E-10 and **replace** with revised Drawing E-10, attached. This change is for a permitting requirement only and is a clarification for City of San Antonio.
2. **Delete** Drawing C-01 and **replace** with revised Drawing C-01, attached. This change is for a permitting requirement with City of San Antonio and includes construction of temporary fencing and a note regarding placement of utilities with respect to trees.
3. **Delete** Drawing M-03 and **replace** with revised Drawing M-03, attached. This change is for a permitting requirement with TCEQ and includes clarification regarding monolithic pour of well headworks and including 16-mesh screen on well vent header.
4. Drawing C-07, Detail 1, **delete** “LIME TREATED SUBGRADE” and **replace** with “6” MIN. PAVEMENT SUBBASE PER SPECIFICATIONS. 9” MIN. ON SLOPED SECTIONS”. **Delete** dimension “2 – 1/3”” and **replace** with “2 – 2/3”. **Delete** Note 6 and **replace** with “DOWEL LENGTH: 14””.

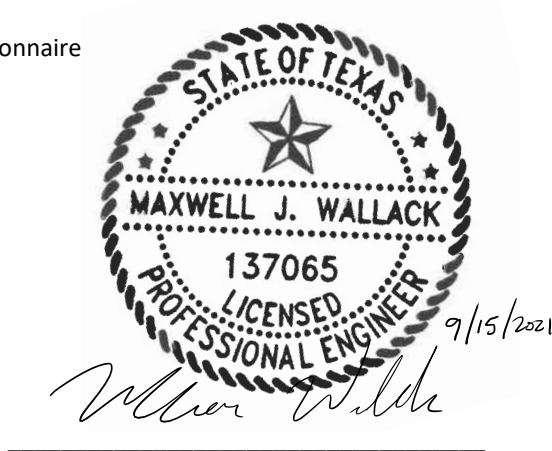
CLARIFICATIONS

1. The Project estimate has increased from **\$12,666,257.33** to **\$12,670,000.00**

END OF ADDENDUM

This Addendum is eleven (11) pages in its entirety.

Attachments: Drawing E-10
Drawing C-01
Drawing M-03
Respondent Questionnaire

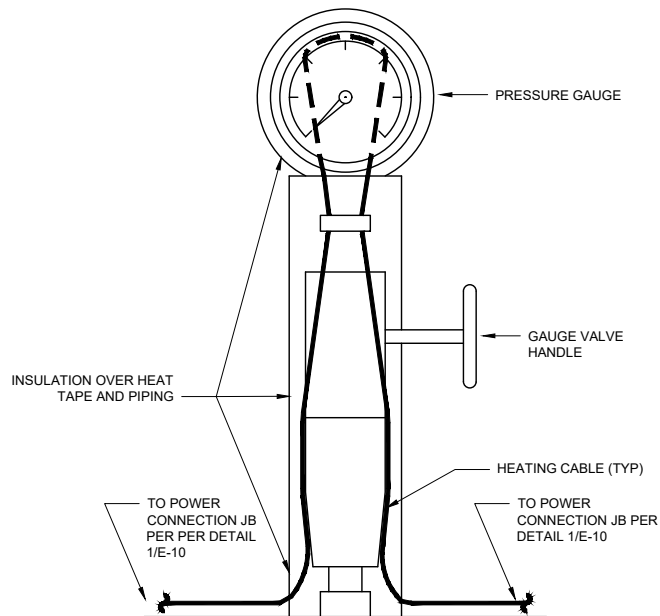


Arcadis U.S., Inc.
Texas Firm No. F-533

LIGHT FIXTURE SCHEDULE				
FIXT TYPE	VOLTAGE	MFR/MODEL*	DESCRIPTION	LAMPS
A	120	RAB LIGHTING ALED 4T105N KW INDUSTRIES POLE	SHOEBOX POLE MOUNTED LED FIXTURE WITH TYPE IV IES DISTRIBUTION. ALUMINUM HOUSING W/ GLASS LENS, FULL CUTOFF DISTRIBUTION AND INTERNATIONAL DARK SKY ASSOCIATION (IDS) RATED. 4000K COLOR TEMPERATURE. 13,204 LUMEN RATING. POLE SHALL BE 20 FT STRAIGHT SQUARE STEEL POLE. PROVIDE GROUND LUGS ACCESSIBLE FROM HANDHOLE FOR EQUIPMENT GROUNDING CONDUCTORS. POLE/FIXTURE COMBINATION SHALL BE WIND RATED FOR 80 MILES PER HOUR (MPH) WITH 1.3 GUST FACTOR. FIXTURE AND POLE SHALL HAVE DARK BRONZE POWDER COATING. PROVIDE INTEGRAL PHOTOCELL WITH FIXTURE FOR DUSK-TO-DAWN OPERATION.	105 W LED
B	120	GE LIGHTING ALBEO ALR1 SERIES	LENSED LED STRIPLIGHT FIXTURE. SURFACE MOUNTED, ENCLOSED FIBERGLASS HOUSING WITH DIFFUSER AND GASKETED LENS. SUITABLE FOR INSTALLATION IN WET LOCATIONS. 4000K COLOR TEMPERATURE. OUTPUT OF 5350 INITIAL LUMENS.	38 W LED

*OR APPROVED EQUAL LIGHTING INSTALLATION SHALL COMPLY WITH MILITARY LIGHTING REGION MLR2 REQUIREMENTS.

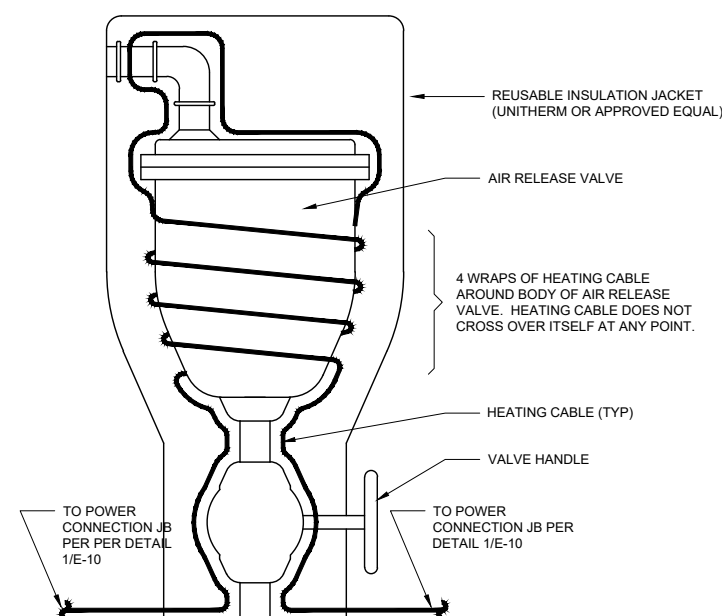
- LIGHT FIXTURE TYPE A IS MOUNTED AT 23'-0" AFG WITH 13,204 LUMEN RATING.
- LIGHT FIXTURE TYPE B IS MOUNTED AT 9'-0" AFG BENEATH ELECTRICAL EQUIPMENT CANOPY WITH 5,350 LUMEN RATING.
- 47,808 TOTAL LUMENS FOR PROPOSED FIXTURES.



PRESSURE GAUGE ASSEMBLY
HEAT TRACE INSTALLATION

DETAIL 1
NTS E-10

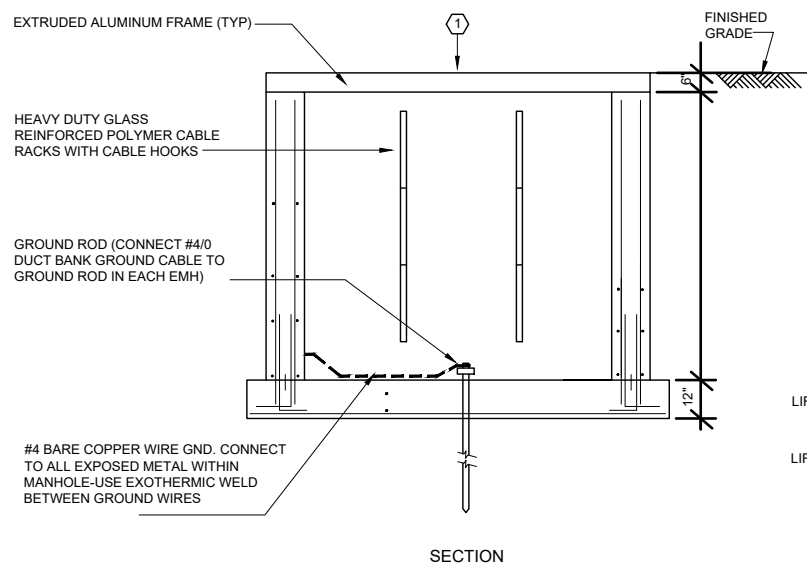
- NOTES:
- HEAT TRACE ALL OTHER VALVES AND PIPE NIPPLES ON THE GAUGE ASSEMBLY NOT SHOWN IN DETAIL IN LIKE MANNER.



AIR RELEASE VALVE
HEAT TRACE INSTALLATION

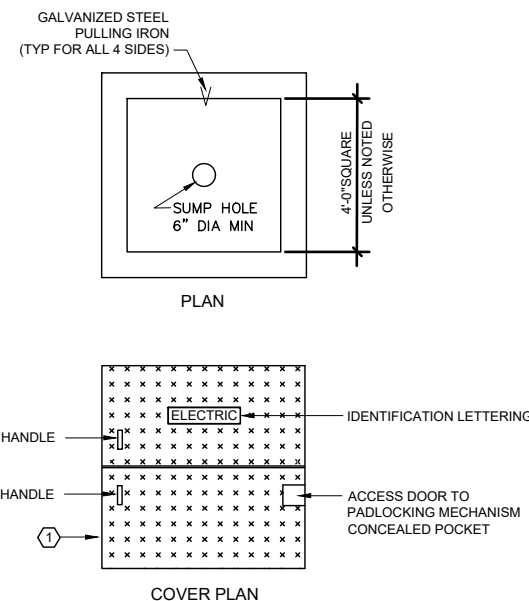
DETAIL 2
NTS E-10

- NOTES:
- HEAT TRACE ALL OTHER VALVES, PIPE NIPPLES AND FITTINGS ON THE AIR RELEASE VALVE ASSEMBLY NOT SHOWN IN DETAIL IN LIKE MANNER.



ELECTRICAL MANHOLE

DETAIL 3
NTS E-10



- GENERAL NOTES:
- INSIDE DIMENSIONS SHALL BE AS SHOWN ON THE DRAWINGS OR SPECIFICATIONS BUT IN NO CASE SMALLER THAN 4'x4'x4'.
 - PROVIDE PRECAST HANDHOLES EQUAL TO OLDCASTLE MH-440-EL W/ COVER AS SHOWN AND REQUIRED BY THE SPECIFICATIONS.
 - BOND GROUND WIRE TO ALL EXPOSED METAL WITHIN MANHOLE.
- KEYED NOTES:
- SEE SECTION 26 05 43.23 FOR COMPLETE REQUIREMENTS.

NO.	DATE	REVISION	BY
1	8/30/21	ADDENDUM #3	BY

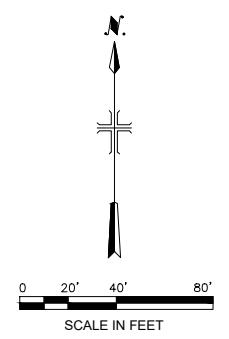
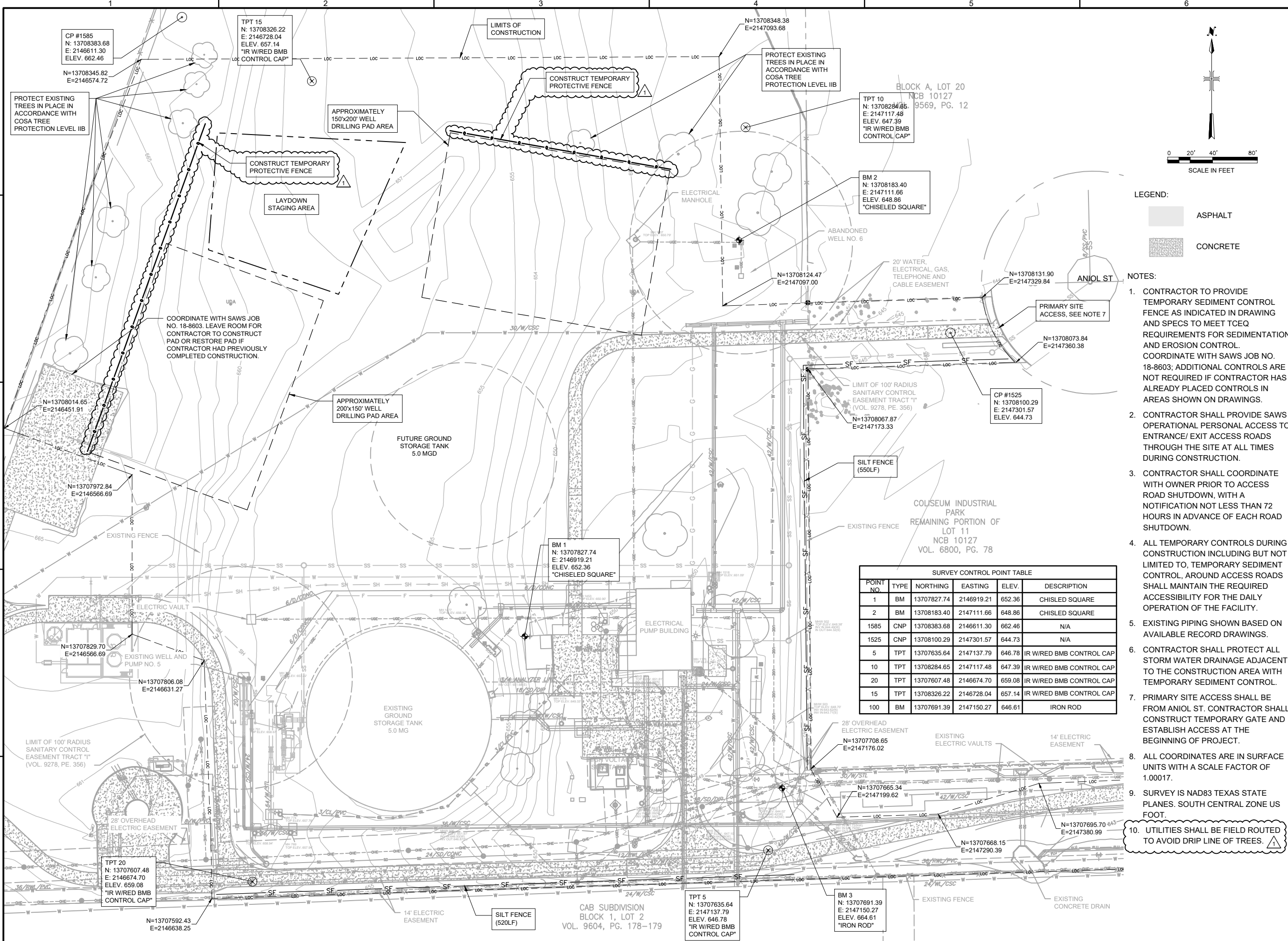
COPYRIGHT: ARCADIS U.S., INC.
DATE: JULY 2021
PROJECT NO.: 30065231
DESIGNED BY: B. YOUNG
DRAWN BY: N. PATEL
CHECKED BY: J. SOKOL

SHEET TITLE
ELECTRICAL

ELECTRICAL DETAILS IV

SCALE: NONE

SHEET E-10
35 OF 41



LEGEND:

- ASPHALT
- CONCRETE

NOTES:

1. CONTRACTOR TO PROVIDE TEMPORARY SEDIMENT CONTROL FENCE AS INDICATED IN DRAWING AND SPECS TO MEET TCEQ REQUIREMENTS FOR SEDIMENTATION AND EROSION CONTROL. COORDINATE WITH SAWS JOB NO. 18-8603; ADDITIONAL CONTROLS ARE NOT REQUIRED IF CONTRACTOR HAS ALREADY PLACED CONTROLS IN AREAS SHOWN ON DRAWINGS.
2. CONTRACTOR SHALL PROVIDE SAWS OPERATIONAL PERSONAL ACCESS TO ENTRANCE/ EXIT ACCESS ROADS THROUGH THE SITE AT ALL TIMES DURING CONSTRUCTION.
3. CONTRACTOR SHALL COORDINATE WITH OWNER PRIOR TO ACCESS ROAD SHUTDOWN, WITH A NOTIFICATION NOT LESS THAN 72 HOURS IN ADVANCE OF EACH ROAD SHUTDOWN.
4. ALL TEMPORARY CONTROLS DURING CONSTRUCTION INCLUDING BUT NOT LIMITED TO, TEMPORARY SEDIMENT CONTROL, AROUND ACCESS ROADS SHALL MAINTAIN THE REQUIRED ACCESSIBILITY FOR THE DAILY OPERATION OF THE FACILITY.
5. EXISTING PIPING SHOWN BASED ON AVAILABLE RECORD DRAWINGS.
6. CONTRACTOR SHALL PROTECT ALL STORM WATER DRAINAGE ADJACENT TO THE CONSTRUCTION AREA WITH TEMPORARY SEDIMENT CONTROL.
7. PRIMARY SITE ACCESS SHALL BE FROM ANIOL ST. CONTRACTOR SHALL CONSTRUCT TEMPORARY GATE AND ESTABLISH ACCESS AT THE BEGINNING OF PROJECT.
8. ALL COORDINATES ARE IN SURFACE UNITS WITH A SCALE FACTOR OF 1.00017.
9. SURVEY IS NAD83 TEXAS STATE PLANES. SOUTH CENTRAL ZONE US FOOT.
10. UTILITIES SHALL BE FIELD ROUTED TO AVOID DRIP LINE OF TREES.



SAN ANTONIO WATER SYSTEM
San Antonio Water System

**ARTESIA PUMP STATION
ADDITIONAL WELL NOS. 7 & 8
PROJECT**

NO.	DATE	REVISION	BY
1	9/21	ADDENDUM #3	MW

COPYRIGHT: ARCADIS U.S., INC.
DATE: JULY 2021
PROJECT NO.: 30065231
DESIGNED BY: M. WALLACK
DRAWN BY: N. CANDELAS
CHECKED BY: R. STANDIFER

SHEET TITLE
CIVIL

EXISTING SITE PLAN,
SURVEY AND
ENVIRONMENTAL
CONTROLS

SCALE: AS SHOWN
SHEET **C-01**
6 OF 41

POINT NO.	TYPE	NORTHING	EASTING	ELEV.	DESCRIPTION
1	BM	13707827.74	2146919.21	652.36	CHISELED SQUARE
2	BM	13708183.40	2147111.66	648.86	CHISELED SQUARE
1585	CNP	13708383.68	2146611.30	662.46	N/A
1525	CNP	13708100.29	2147301.57	644.73	N/A
5	TPT	13707635.64	2147137.79	646.78	IR W/RED BMB CONTROL CAP
10	TPT	13708284.65	2147117.48	647.39	IR W/RED BMB CONTROL CAP
20	TPT	13707607.48	2146674.70	659.08	IR W/RED BMB CONTROL CAP
15	TPT	13708326.22	2146728.04	657.14	IR W/RED BMB CONTROL CAP
100	BM	13707691.39	2147150.27	646.61	IRON ROD

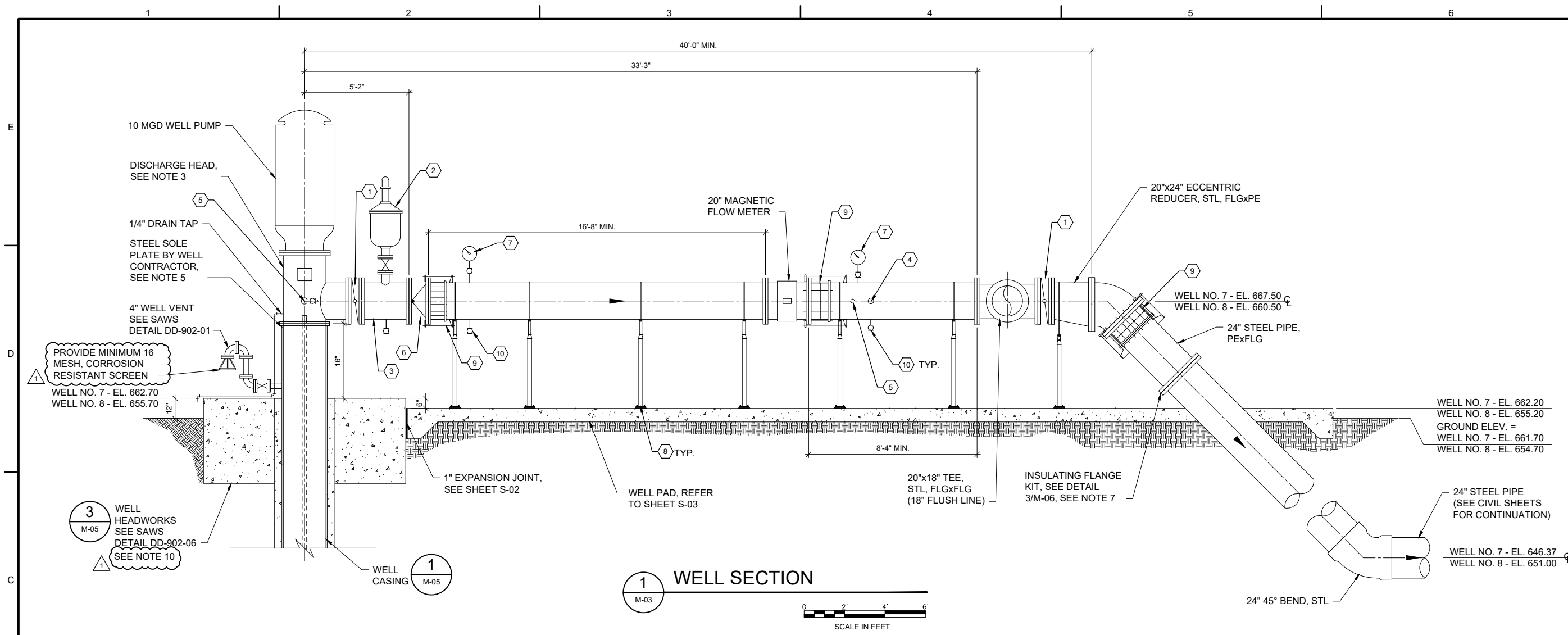


SAN ANTONIO WATER SYSTEM
San Antonio Water System
ARTESIA PUMP STATION
ADDITIONAL WELL NOS. 7 & 8 PROJECT

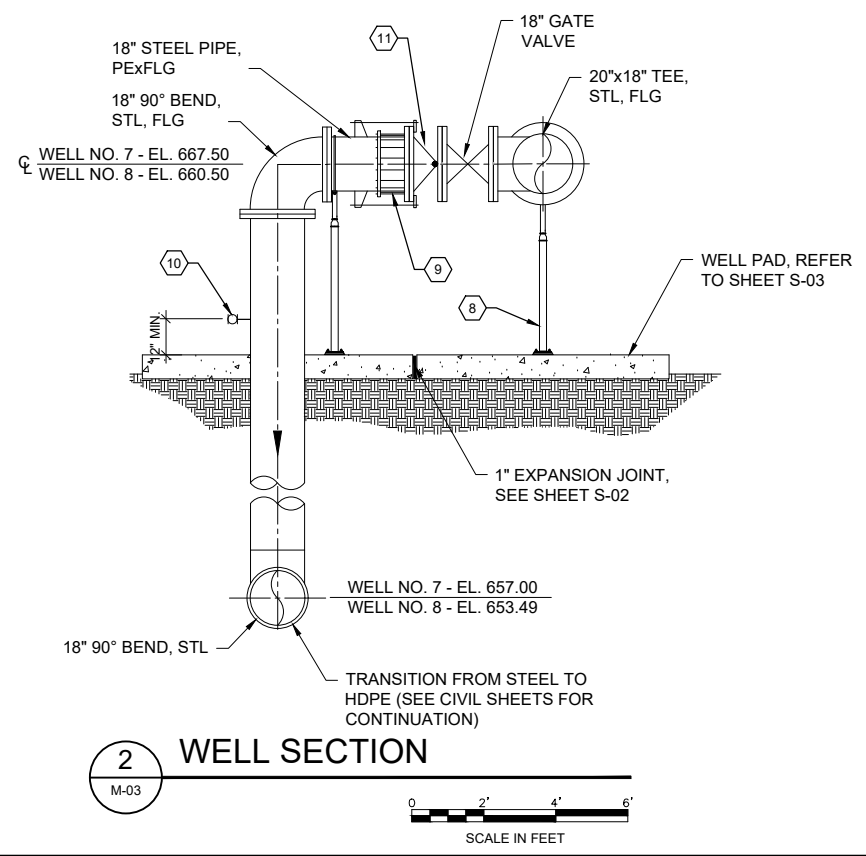
NO.	DATE	REVISION	BY
1	9/21	ADDENDUM #3	MW

COPYRIGHT: ARCADIS U.S., INC.
DATE: JULY 2021
PROJECT NO.: 30065231
DESIGNED BY: M-WALLACK
DRAWN BY: N.CANDELAS
CHECKED BY: R. STANDIFER

SHEET TITLE
MECHANICAL
WELL NO. 7 & 8 SECTION
SCALE: AS SHOWN
SHEET **M-03**
16 OF 41



1 WELL SECTION
SCALE IN FEET



2 WELL SECTION
SCALE IN FEET

- KEYNOTES "X"
- 20" BUTTERFLY VALVE W/ HANDWHEEL, FLG.
 - 4" COMBINATION AIR AND VACUUM RELEASE VALVE, SEE DETAIL 2/M-06.
 - 20"x20"x2" TEE, STL, FLGxFLG
 - 3/4" SAMPLE TAP, REFER TO SAWS DETAIL DD-901-03.
 - BEARING PRELUDE WATER LINE, SEE DETAIL 1/M-06.
 - 20" DUO CHECK VALVE, FLG.
 - PRESSURE GAUGE, SEE DETAIL 2/M-07.
 - ADJUSTABLE PIPE SUPPORT, SEE DETAIL 1/M-08 AND 2/M-08. AT 10'-0" MAX SPACING.
 - RESTRAINED FLANGED COUPLING ADAPTER, REFER TO SAWS DETAIL DD-902-02.
 - 2" DRAIN TAP W/ BALL VALVE, REFER TO SAWS DETAIL DD-901-03.
 - 18" DUO CHECK VALVE.
- NOTES:
- ALL BURIED PIPING SHALL BE RESTRAINED WITH RESTRAINED JOINTS.
 - SEE SPECIFICATIONS FOR PIPE SUPPORT SPACING REQUIREMENTS.
 - CENTERLINE ELEVATION OF WELL DISCHARGE PIPING TO BE BASED ON WELL HEAD ELEVATIONS AND DIMENSIONS SHOWN AND TYPE OF WELL PUMP DISCHARGE HEAD PROVIDED.
 - INSULATE ALL PIPING SMALLER THAN 4 INCHES IN ACCORDANCE WITH SPECIFICATIONS.
 - WELL CONTRACTOR SHALL PROVIDE 316SS ANCHOR BOLTS AND PUMP HEAD ANCHOR SCREENS AS REQUIRED TO COMPLETE THE WORK.
 - PAINT ALL EXPOSED PIPING BOTH NEW AND EXISTING IN ACCORDANCE WITH SPECIFICATIONS.
 - CATHODIC PROTECTION FOR BURIED PIPE WILL BE PROVIDED UNDER SEPARATE PROJECT, SAWS JOB NO. 18-8603. COORDINATE WITH SAWS AS REQUIRED.
 - USE A TEMPORARY CAP IN ACCORDANCE WITH SAWS DETAIL DD-902-07 IF WELL IS COMPLETED BEFORE PUMP HEAD AND MOTOR ARE READY.
 - WELLHEAD SHALL HAVE TWO (2) 1 1/2" PORTS FOR ADDITIONAL CONDUITS, FOR PRESSURE TRANSDUCER AND MANUAL MEASURING PORT.
10. WELL HEADWORKS SHALL BE MONOLITHIC. 1



RESPONDENT QUESTIONNAIRE

PROJECT NAME: ARTESIA PUMP STATION ADDITIONAL WELL NOS. 7 & 8 _____

Instructions: The Respondent Questionnaire is a required questionnaire. Complete the questionnaire by inserting the requested information. Do not modify or delete the questions.

GENERAL INFORMATION

1. **Respondent Information:** Provide the following information regarding the Respondent. (NOTE: Co-Respondents are two or more entities proposing as a team or joint venture with each signing the contract, if awarded. Sub-contractors are not Co-Respondents and should not be identified here. If this proposal includes Co-Respondents, provide the required information in this Item #1 for each Co-Respondent by copying and inserting an additional block(s) before Item #2.)

Respondent Name: _____
(NOTE: Give exact legal name as it will appear on the contract, if awarded.)

Principal Address: _____

City: _____ State: _____ Zip Code: _____

Telephone No. _____ Fax No: _____

Social Security Number or Federal Employer Identification Number: _

2. **Contact Information:** List the one person who SAWS may contact concerning your proposal or setting dates for meetings.

Name: _____

Address: _____

City: _____ State: _____ Zip Code: _____

Telephone No. _____ Fax No: _____

Email: _____

3. Identify the principal contact person authorized to commit the Respondent to a contractual agreement.

4. Does Respondent anticipate any mergers, transfer of organization ownership, management reorganization, or departure of key personnel within the next twelve (12) months?

Yes No

5. Is Respondent authorized and/or licensed to do business in Texas?

Yes No If "Yes", list authorizations/licenses.

6. **Debarment/Suspension Information:** Has the Respondent or any of its principals been debarred or suspended from contracting with any public entity?

Yes No If "Yes", identify the public entity and the name and current phone number of a representative of the public entity familiar with the debarment or suspension, and state the reason for or circumstances surrounding the debarment or suspension, including but not limited to the period of time for such debarment or suspension.

7. **Bankruptcy Information:** Has the Respondent ever been declared bankrupt or filed for protection from creditors under state or federal proceedings?

Yes No If "Yes", state the date, court, jurisdiction, cause number, amount of liabilities and amount of assets.

8. Provide any other names under which Respondent has operated within the last 10 years.
-

9. **Litigation Disclosure:** Respond to each of the questions below by checking the appropriate box. Failure to fully and truthfully disclose the information required in the Litigation Disclosure questions may result in the disqualification of your proposal from consideration or termination of the contract, once awarded.

- a. Have you or any member of your Firm or Team to be assigned to this engagement ever been indicted or convicted of a felony or misdemeanor greater than a Class C in the last five (5) years?

Yes No

- b. Have you or any member of your Firm or Team to be assigned to this engagement been terminated (for cause or otherwise) from any work being performed for the San Antonio Water System or any other Federal, State or Local Government, or Private Entity?

Yes No

- c. Have you or any member of your Firm or Team to be assigned to this engagement been involved in any claim or litigation with the San Antonio Water System or any other Federal, State or Local Government, or Private Entity during the last ten (10) years?

Yes No

If you have answered "Yes" to any of the above questions, please indicate the name(s) of the person(s), the nature, and the status and/or outcome of the information, indictment, conviction, termination, claim or litigation, as applicable. Any such information should be provided on a separate page, attached to this form and submitted with your proposal.

10. Government Code Chapter 2274 verifications:

- a. Are you, Contractor, held or controlled by individuals who are citizens of China, Iran, North Korea, Russia or a country designated by the Governor of the State of Texas pursuant to Texas Government Code Chapter 2274?

Yes No

- b. Are you, Contractor, held or controlled by a company or other entity, including a governmental entity, that is owned or controlled by citizens of or directly controlled by the government of China, Iran, North Korea, Russia or a country designated by the Governor of the State of Texas pursuant to Texas Government Code Chapter 2274?

Yes No

- c. Are you, Contractor, headquartered in China, Iran, North Korea, Russia or a country designated by the Governor of the State of Texas pursuant to Texas Government Code Chapter 2274?

Yes No

11. Addendums: Respondent is required to acknowledge receipt of all addendums.

None Yes If "Yes", Identify.

The information provided above is true and accurate to the best of my knowledge. Furthermore, we understand that failure to complete the Respondent Questionnaire may subject this firm to elimination from the selection process.

Signature

Date

Printed Name

Title